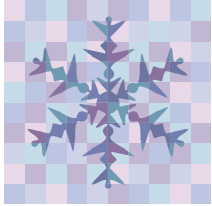


## NOVEMBER 2014 NEWSLETTER



### **WINTER PARKING BEGINS** **November 15, 2014 and ends March 15, 2015**

Winter Parking means that parking of any motor vehicle is prohibited upon any street within the Village limits

between 2:00 a.m. and 6:00 a.m. from November 15 to March 15. This is according to the Village of Dane Ordinance Chapter 495 Article III Vehicles and Traffic. For anyone interested, there's lots more good information in Chapter 495. Ordinances can be found online on the Village Website at [www.villageofdane.org](http://www.villageofdane.org)

### **LEAVES, LEAVES, LEAVES**

Please do not burn leaves on the curb or in the road way. Damage to the curb or roadway could mean fines to the property owner and charges for repair of any damages. Leaves can be taken to the Compost Site at the Public Works Garage.



### **THANKSGIVING HOLIDAY VILLAGE CLOSED**

The Village of Dane Public Works Department and the Village Clerk's Office will be closed on Thursday, November 27 and Friday, November 28, 2014 in order to

allow our staff time with their families.

**Happy Thanksgiving to you!**

### **SANTA IS COMING**

Lake Melvin Yacht Club is hosting SANTA at the Village of Dane Community Center. On Monday December 8, 2014 from 5:30 to 7:00 pm Santa will be available so you can get your picture taken, do some fun crafts, and turn in those "Wish Lists" that are popular this time of year. Admission is an unwrapped toy or non-perishable food item.



### **BOOKMOBILE in DANE**

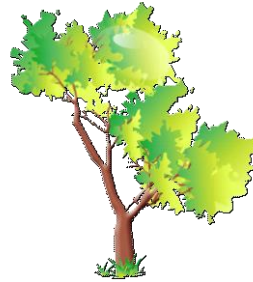
The Dane County Library System provides the BOOKMOBILE on a weekly basis in the Village of Dane. The Bookmobile is at the Dane Community Center every Monday evening from 6:15 to 8:00 pm. Everyone is welcome to visit to check out books and other media related items.



### **BRUSH PICK UP**

Brush is picked up on the second Tuesday of every month. Please place your limbs on the curb prior to the scheduled pick up day. Please do not place tree limbs or brush in the Compost Pile at the Public Works Garage.

**And Christmas Trees will be picked up January 6, 13, & 20, 2015, weather permitting.** Please, do not put your tree out in a snowstorm. Thank you!



### **DANE VETERAN'S MEMORIAL**



Construction for the Veteran's Memorial is well underway. If you would like to make a donation or purchase a block in honor of a Vet, please contact the American Legion Post #503 or pick up a form at

the Clerk's Office. Block sizes are 8x8, 8x16 or 16x16. Engraving on each block is your option. Honor a Vet and support the Dane Veteran's Memorial Monument.

### **PROPERTY TAX BILLS**

According to state law property tax bills must be in the mail by the third Monday in December. If you are new in the Village, please check "Access Dane" to be sure your mailing address is correct. Contact the Village Clerk to have yours updated if need be.

